

Hitotsubashi University

Pursuing Our Designated National University Corporation Vision



Satoshi Nakano
President, Hitotsubashi University

January 12, 2022

National University Corporation Evaluation Committee
Designated National University Corporation Sub-committee Interview



Hitotsubashi University

The only university specializing in the social sciences among Designated National University Corporations

“Our continuing mission is to create intellectual and cultural property which will contribute to the building of free and peaceful political and economic societies in Japan and the world and to train those who will assume positions of leadership.” (Mission Statement)

The very first public university business schools which have received AACSB accreditation

AACSB

Accredited in July 2021

The ratio of new themes adopted for Grants-in-Aid for Scientific Research-KAKENHI-

57.9%

Ranking First
14th top position (2004-2020).
※the national average was 27.4%

Top cumulative pass rate among law schools across Japan

82.9%

Ranking First
Among Graduates (2005-2019)
※the national average was 54.6%

The Joint Usage and Research Center Programs at the Institute of Economic Research

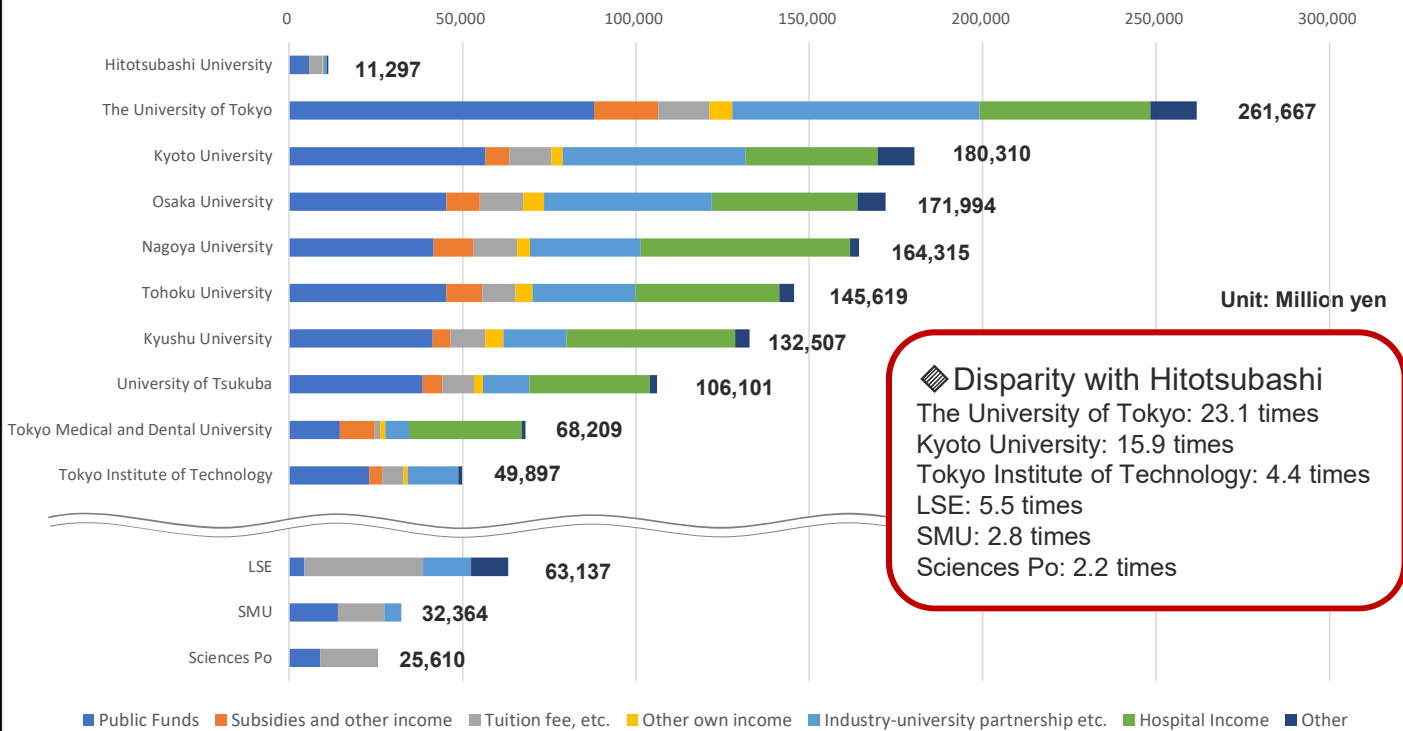
Highest (S) Rating

“High-level empirical analysis of the Japanese and global economies”

Ratio of women full professor among designated national universities

Highest

Comparison of fiscal scale of designated national universities in Japan and benchmark universities overseas with Hitotsubashi University



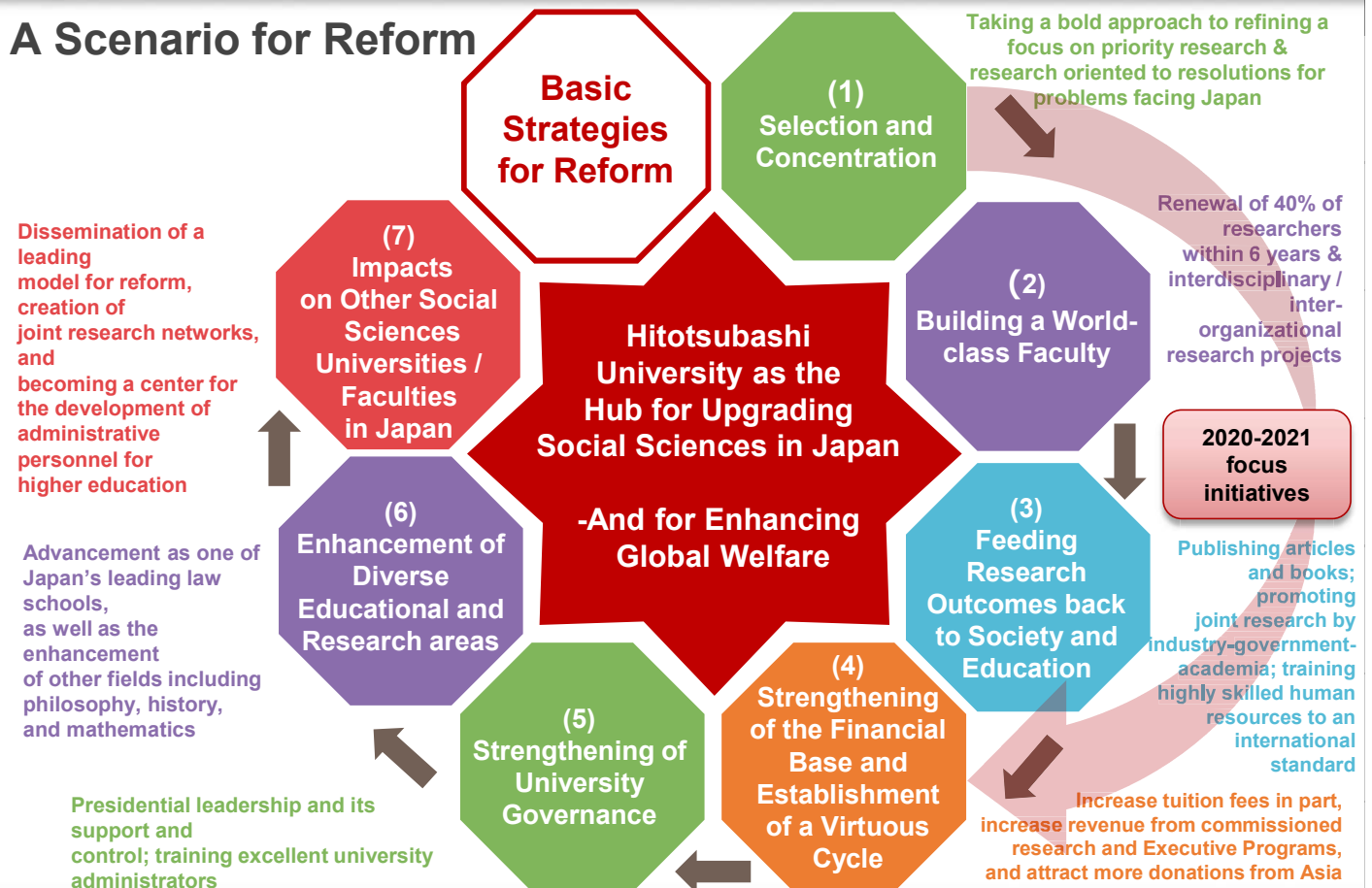
Source: University financial statements (2020) *Excludes subsidies for maintenance of university facilities and other university hospital income
 Source: Created by Hitotsubashi University from universities' financial reports, financial statements, and websites (Hitotsubashi AY2020, Sciences Po 2014, and SMU and LSE 2019-2020)

Contents

- I. Progress status of Hitotsubashi University (HU)'s Vision for a Designated National University (DNU) Vision
- II. Evidence of a greater international presence of HU
- III. HU's plans and prospects for the 4th mid-term goal period
- IV. Conclusion

I. Progress status of HU's Vision for a DNU Vision

A Scenario for Reform



I. Progress status of HU' Vision for a DNU Vision



Strategy 1

Selection and Concentration



A comprehensive step to strengthen faculty for generating an international output

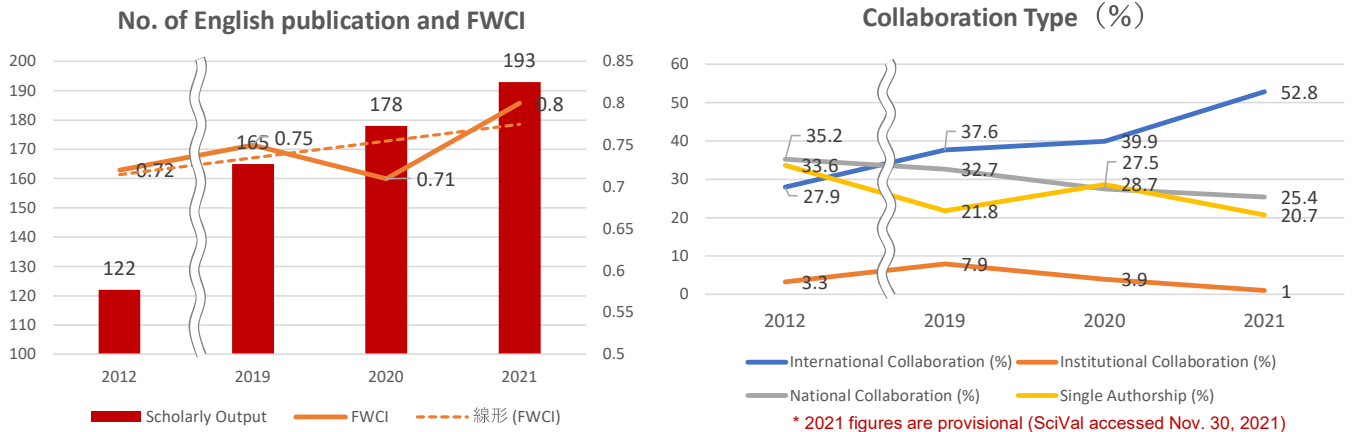


Strategy 2

Building a World class Faculty

Accelerated turnover of Research Teams

- Raise quality to international standards by hiring 122 (approx. 40%) new faculty members in the first six years and 212 (approx. 70%) new researchers in the first 11 years
- Two approaches (star researchers and young researchers), special annual salary scheme, international recruitment, dispatch of recruiting teams to international conferences
- Make further use of the tenure track system to revitalize our workforce



The number of English publications, FWCI and international co-authorship ratio have lifted. As our research activities become increasingly international, the quality of our output is also rising.



Strategy 2

Building a World class Faculty

Building a World class Faculty: International performance indices for newly hired faculty members (including planned hires)

1. No. of English publications* (2016–2020)

No. of English publications*	Average per faculty	Notes
Newly hired Faculty members (including planned hires)	1.83	LSE (2019): 1.34

2. FWCI* (2016–2020)

FWCI*	Average per faculty	Notes
Newly hired Faculty members (including planned hires)	1.16	World average: 1

3. International co-authorship ratio (%)* (2016–2020)

International co-authorship ratio*	Average per faculty	Notes
Newly hired Faculty members (including planned hires)	41.1	Hitotsubashi average (2016–2020): 35.9

Our newly hired faculty members are scoring highly in terms of the number of English publications, FWCI, and international co-authorship ratios, with steady progress being made toward hiring a world class research workforce and our research capacity improving in both quality and quantity.

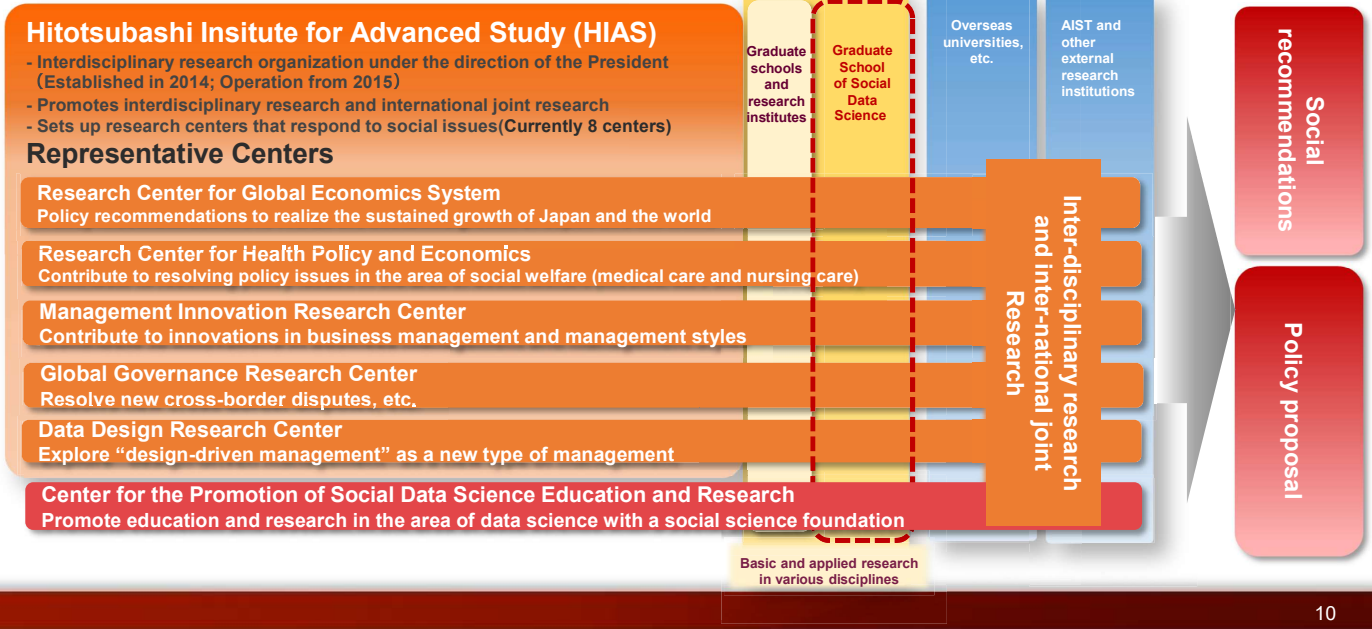
* The number of English publications etc. of newly hired faculty members in 2020 and those to be newly hired (25 in total) for which information is available in the Scopus database was calculated. (Nov. 30, 2021)



Strategy 2

Building a World class Faculty

- Create synergistic effects through international joint research at the Hitotsubashi Institute for Advanced Study (HIAS) under the direction of the President
- Accelerate cross-disciplinary and international joint research through the establishment of a **Center for the Promotion of Social Data Science Education and Research** and a **Faculty and Graduate School of Social Data Science** (tentative name)



Strategy 3

Feeding Research Outcomes back to Society and Education

Reinvesting issue-oriented research into education and society



Progress measured against international benchmarks

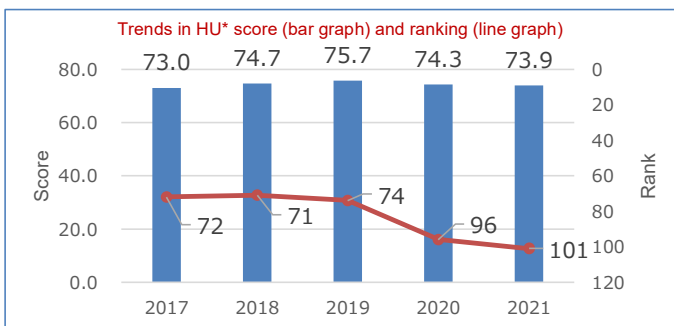
QS Subject Rankings 2021 Social Sciences & Management (Social Sciences)

DNU Vision targets and current status

QS World University Ranking Targets

Area	2018	In 10 years	In 20 years
Social Sciences and Management	71	Top 30	Top 10
Economics & Econometrics	51-100	Top 30	-
Accounting & Finance	51-100	Top 30	-
Business & Management Studies	51-100	Top 30	-
Politics & International Studies	51-100	Top 30	-

Subject	Ranking 2017	Ranking 2018	Ranking 2019	Ranking 2020	Ranking 2021
Social Sciences and Management	72 [4]	71 [4]	74 [4]	96 [4]	101 [3]
Economics & Econometrics	51-100 [3]	51-100 [3]	51-100 [2]	51-100 [3]	72 [3]
Accounting & Finance	101-150 [2]	51-100 [2]	51-100 [2]	51-100 [2]	101-150 [2]
Business & Management Studies	101-150 [3]	51-100 [1]	51-100 [3]	101-150 [4]	111 [2]
Politics & International Studies	101-150 [5]	51-100 [4]	101-150 [5]	101-150 [5]	151-200 [6]



2021 Social Sciences & Management

Figures in square brackets indicate rankings in Japan

# Rank	Overall Score	Academic Reputation (50%)	Employer Reputation (30%)	Citations per Paper (10%)	H-Index (10%)
2 LSE	94.5	100.0	87.7	92.7	89.4
34 The University of Tokyo	80.7	81.6	84.5	80.3	65.4
56 Sciences Po	77.6	81.8	69.9	85.8	71.4
76 SMU	75.7	80.1	69.2	85.9	62.5
83 Kyoto University	75.2	76.3	75.7	79.6	64.0
101 Hitotsubashi University	73.9	79.1	74.1	63.5	57.4
101 Waseda University	73.9	78.2	74.6	71.0	53.2

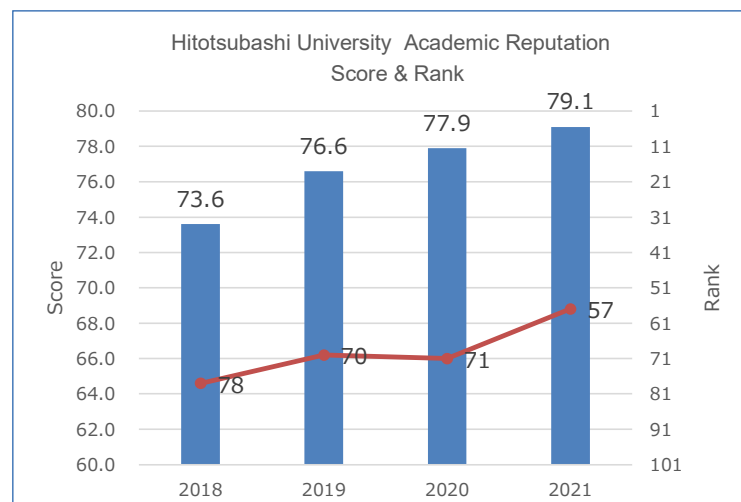
Progress measured against international benchmarks

Issues

Hitotsubashi's Reputation scores are comparatively high, but our Citations per Paper and h-index scores are low, indicating that we need to build our research capacity

Steps to boost our ranking:

- (1) Boost research capacity by upgrading our researcher workforce to international standards
- (2) Use our research and education networks to strengthen partnerships with businesspeople and researchers outside the University



(Ref.) QS Subject Rankings
Social Sciences & Management METHODOLOGY

Indicators	WEIGHTINGS
Academic Reputation	50%
Employer Reputation	30%
Citations per Paper	10%
h-index	10%

II. Evidence of a greater international presence of HU

14

1. HU Received an International Accreditation of AACSB

AACSB International —The Association to Advance Collegiate Schools of Business is a leading international accreditation organization for management education based in the United States, and **less than 6%** of business schools in the world are accredited by AACSB.

Hitotsubashi Business School are the sixth school in Japan and **the first public university to receive this accreditation in 2021.**

Our AACSB accreditation covers a wide range of business-related educational programs, including (1) undergraduate programs, (2) MBA, and DBA programs, and (3) MSc and Ph.D. programs for researcher training.

Promote further advancement and internationalization of business education and research

15

2. HIAS : Global Contribution to Universal Health Coverage (UHC)

- Establish an international collaborative research platform to further the implementation of health technology assessment (HTA) towards universal health coverage in low and middle income countries.
- Build an international research exchange center to provide policy support for using HTA to improve the efficiency of medical budget allocation, as well as a center for training junior researchers and policy-makers through joint primary research, workshops, and training programs

*Collaboration with Overseas Institutions

- Thai National Health Foundation (NHF)
- Health Intervention and Technology Assessment Program (HITAP)
- Saw Swee Hock School of Public Health (National University of Singapore)
- Mahidol Oxford Tropical Medicine Research Unit (MORU)

Kingdom of Bhutan

- Workshop at Bhutan's Ministry of Health
- Joint research on HTA and noncommunicable diseases

Thailand / Singapore / Japan

- Research on evaluation of health technology

Republic of Senegal

- Workshop on HTA
- Joint collaboration on UHC monitoring project and the introduction of HTA

Thailand

- Hold Annual Conference and academic seminars
- Joint research on cost-effectiveness of an intervention to reduce noncommunicable diseases

ASEAN

- Developing a communicable disease surveillance system within the ASEAN nations

Funded by JSPS KAKENHI Grant Number 21H04396 and JSPS Core to Core Program Grant Number JPJSCCB20200002

Core-to-Core Program



3. Networking with the world's top universities

(1) SIGMA

Global Virtual Course "Managing the SDGs"

- 120 students registered in AY2020-21 from partner institutions across the globe
- Offers a series of joint online lectures, plus an active-learning experience through groupwork (producing a short video)
- Teaching innovation for "internationalization at home"



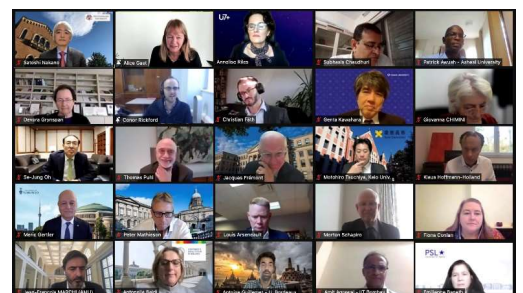
SIGMA partners are:

Copenhagen Business School (Denmark)
Esade Business School (Spain)
FGV/EBAPE (Brazil)
Hitotsubashi University (Japan)
Renmin University of China (China)
Singapore Management University (Singapore)
Université Paris Dauphine-PSL (France)
Universität St. Gallen (HSG) (Switzerland)
WU Wien (Austria)



(2) Enhance global partnership

Enhance our global education and research network by concluding double degree agreements with Yale in the US and Katholieke Universiteit Leuven in Belgium, etc., and by participating with the world's leading universities in the U7+ Alliance



The third U7+ Summit held online (2021)

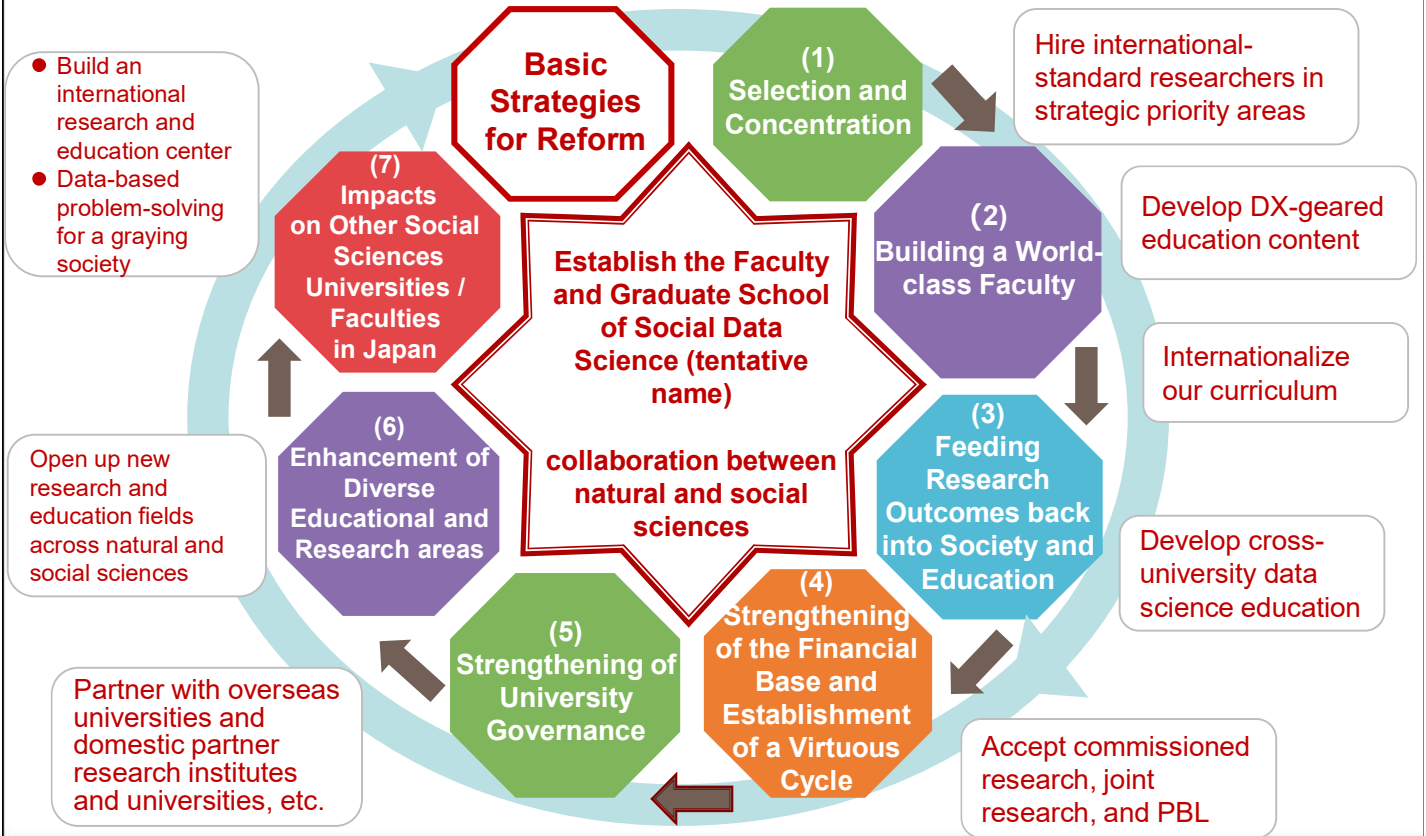
III. HU's Plans and prospects for the 4th mid-term goal period



Next stage of our Reform and Growth



Establishment of the Faculty and Graduate School of Social Data Science (tentative name) as a driving force for our Reform and Growth



20

Establishment of the Faculty and Graduate School of Social Data Science (tentative name) as a driving force for our Reform and Growth

Education and research foundation in mathematics and data science at Hitotsubashi University

- Traditionally strong in mathematics and statistics education and research
- Stockpile of statistics and POC research using social data
- Huge number of research assets, including the various databases, etc., built up by the Institute of Economic Research
- Research through industry-government-university partnership using Big Data and AI

Establishment of the new Faculty and Graduate School of Social Data Science (tentative name)

- **First time in Japan** that social data science will be **established as a new social science education and research area**
- Reform education organizations to **train personnel with a cross-cutting and integrated knowledge of the humanities and sciences**
- Existing faculties, etc., to work with new faculties and graduate schools to **create new humanities and social science areas**
- **Internationalize the curriculum** based on trends in data science-related education at key universities overseas

Specific steps and effects

- **Hire top-class faculty members** to open up new research areas in social data science
- Create a center for training advanced personnel and creating knowledge beyond the bounds of existing disciplines through **co-creation between natural and social sciences**
- Use **cross-appointments** with partner research institutes and universities, etc.
- **Greatly strengthen Hitotsubashi's social partnerships** through commissioned research, joint research, and PBL, etc.

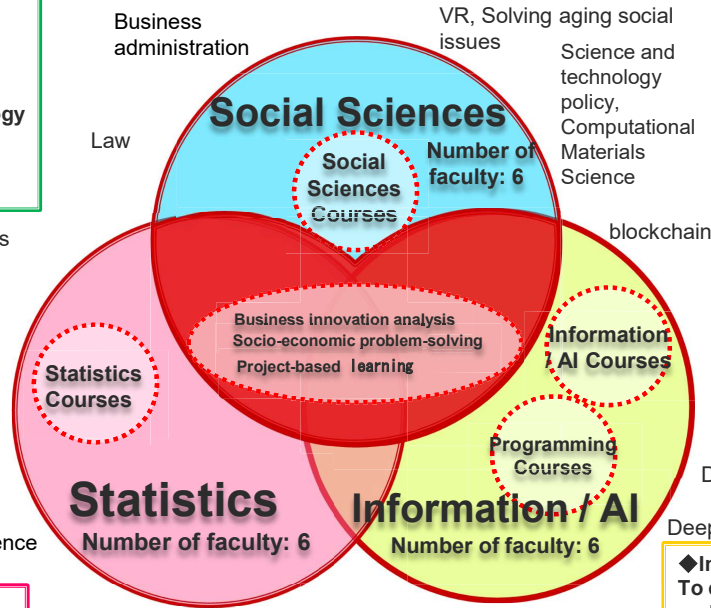
21

Composition of faculty members in the Faculty and Graduate School of Social Data Science

We have a diverse faculty composition including females and young people for research and educational practice aimed at solving actual social issues, and have set up three fields: statistics, information / AI, and social sciences, and considered the balance between fields and the diversity within the fields.

◆ **Cross-Appointment Agreement (tentative)**
 > Tokyo Institute of Technology
 > National Institute of Advanced Industrial Science and Technology (AIST)
 > The Institute of Statistical Mathematics

◆ **Social Sciences Field**
The Division of Social Sciences will create value for society by utilizing the knowledge of statistics, information, and AI based on specific social needs, such as responding to an aging society, digitization of the humanities and social sciences, DX in policy making, and post-DX human resources.
Number of faculty: 6



◆ **Statistics Field**
To develop the frontiers of advanced statistics as a basis for data science, targeting specific social issues.
Number of faculty: 6

◆ **Information and AI Field**
To expand the basic research of AI and improve the maturity of the technology through the development of AI technology that is highly necessary for social implementation.
Number of faculty: 6

※Description and details are tentative and subject to change.

IV. Conclusion

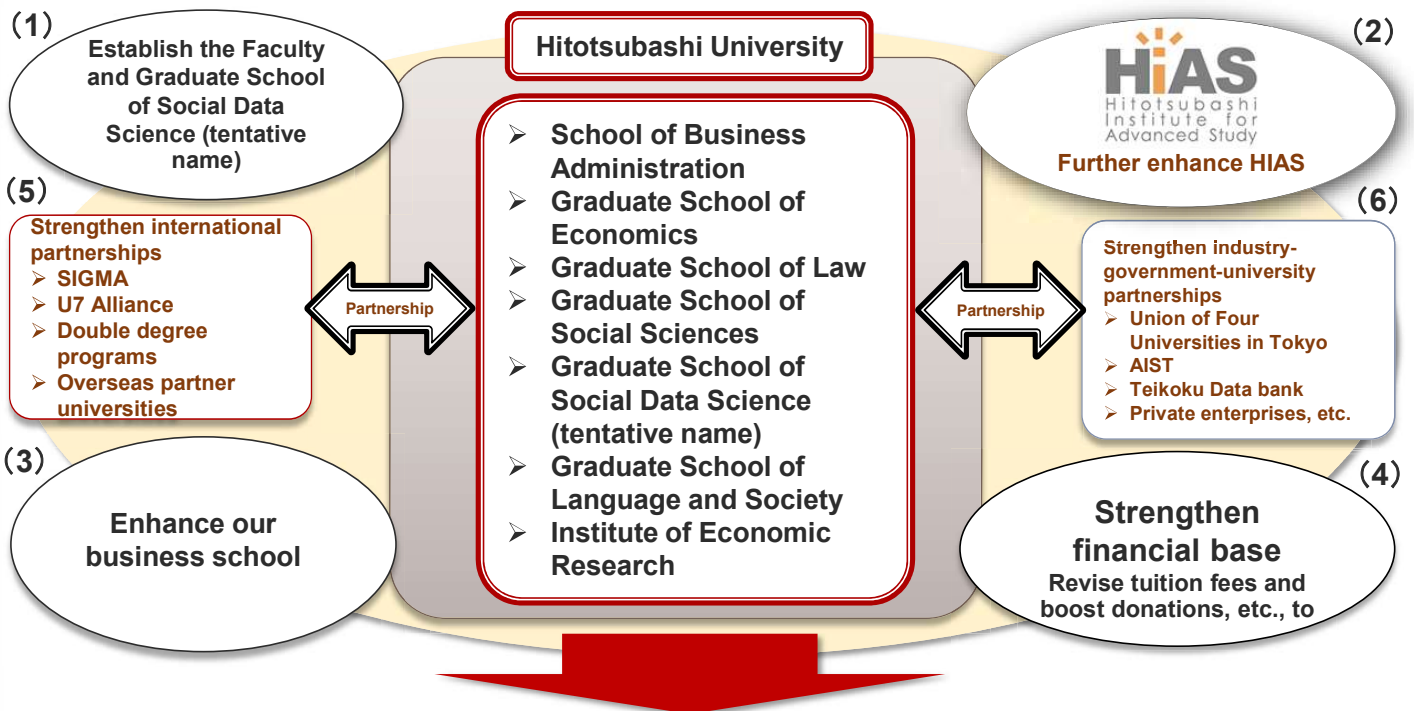
○ Current progress status

- Progress with hiring international-standard faculty members in strategic priority areas
- Improvement of international research performance indices
- Development of international research collaboration and contribution to global issues (particularly in HIAS)
- Networking with the world's top universities
- AACSB accreditation

○ Further Steps needed to be taken

To address our relative weakness of international competitiveness, we will continue our effort to reform existing education and research organizations and build a world-class faculty, aiming at a greater international presence.

○ Flagship Initiatives for our Reform and Growth



A world-class education and research hub in the social sciences

