



文部科学省

MINISTRY OF EDUCATION,
CULTURE, SPORTS,
SCIENCE AND TECHNOLOGY-JAPAN

16th OECD/Japan Seminar

Education of Hope

~Tohoku's efforts at creative reconstruction education ~

February 9, 2014

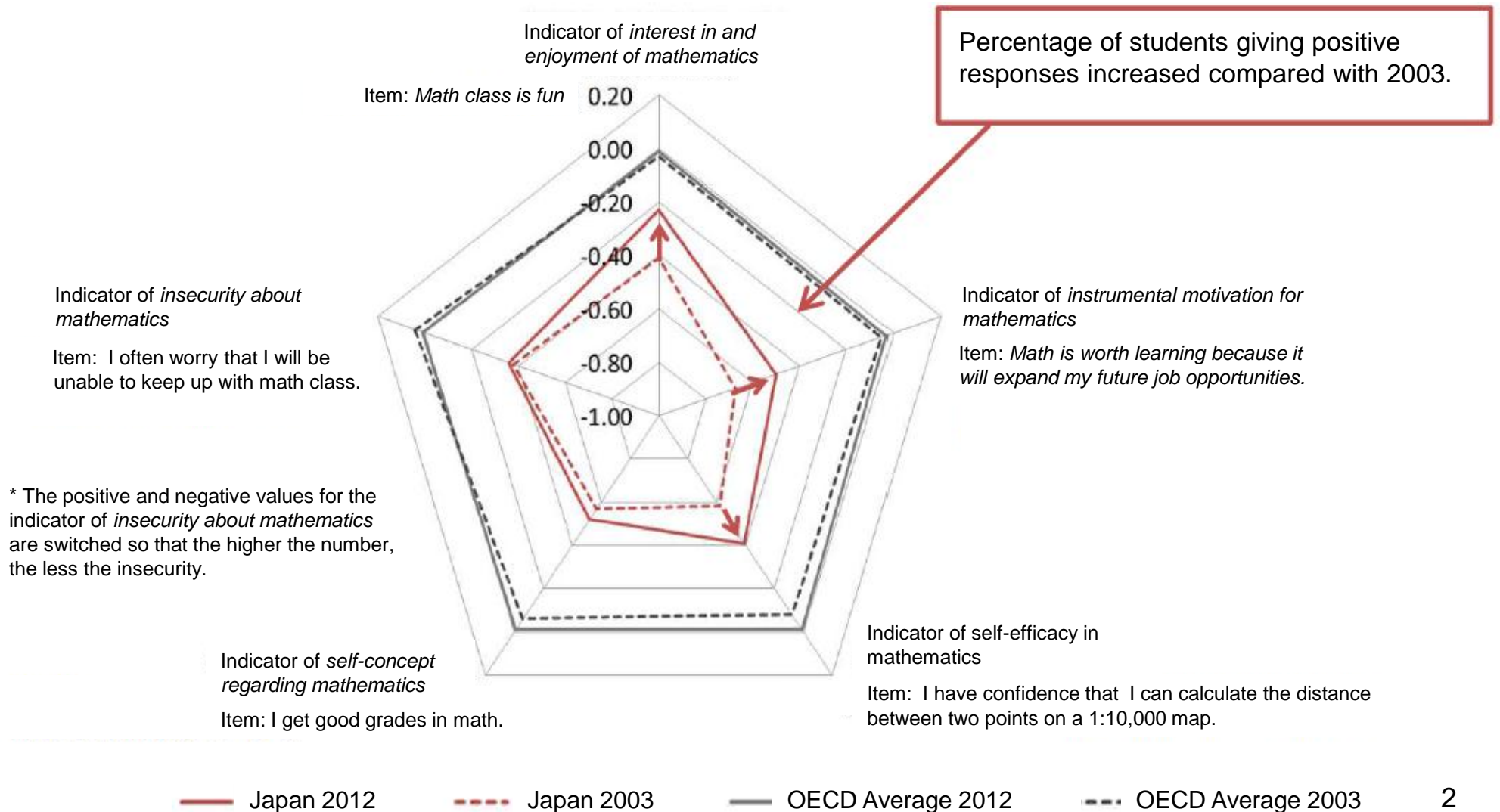
Kihei Maekawa

Director-General

Elementary and Secondary Education Bureau

Changes in Learning Motivation Boost Mathematical Literacy (from PISA 2012)

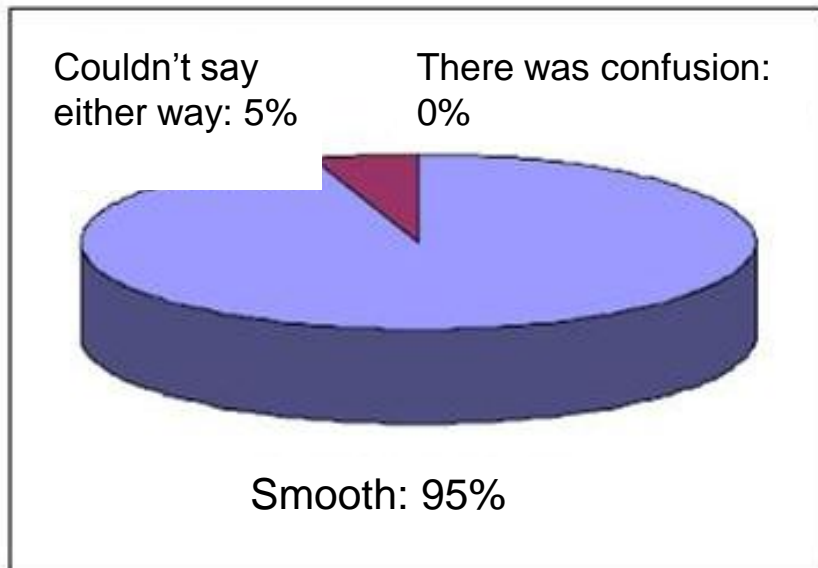
Significant increase in positive responses for three indicators: interest in and enjoyment of mathematics; instrumental motivation for mathematics; and feeling of self-efficacy in mathematics.



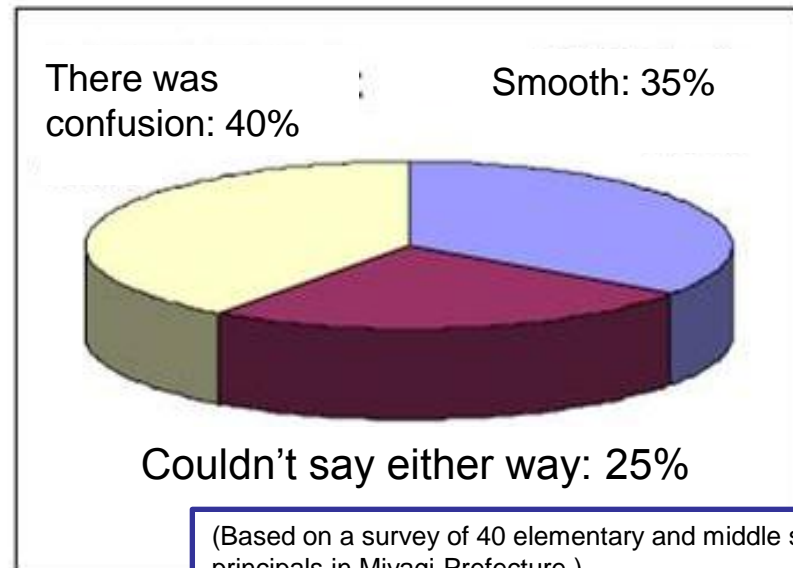
- The large role played by teachers at schools that became evacuation shelters
- School reopenings and relationship with community
In Okumamachi, Fukushima, schools were central to sustaining the community.
- *Schools with close ties to the community* have important functions in times of emergency
- At the same time, problems long faced by schools and communities come to light.

Q: Was the transition to becoming a local autonomous organization as a shelter smooth? (Principal)

(Twenty schools that had been set up as school community headquarters.)



(Twenty schools that had not been set up as school community headquarters.)



(Based on a survey of 40 elementary and middle school principals in Miyagi Prefecture.)

Iwaki Student Council Presidents Summit (Iwaki, Fukushima Prefecture)

All middle school student body presidents work closely together in order to develop the future leaders of Iwaki in 20 or 30 years. They continue to participate after graduation as senior student council presidents.



Main endeavors:

- Send students to Hiroshima, Nagasaki, South Korea and the U.S. The students gain a wider perspective while also conveying news of their hometown's recovery.
- Raise money to help build schools in rural areas of Thailand that provided support after the disastrous earthquake.
- Leadership training from 22 top executives of global corporations
- Participate in nationwide student council summit, OECD Tohoku Schools, etc.

These after-school facilities were provided by government officials, parents, townspeople, NPOs and others in the community for the children who lost places to go after school due to the disastrous earthquake of March 11, 2011. They also support schools' career education (workplace experience, experiential learning on school trips).



June 2011

A young lad with no place to go lies on the road to study next to temporary housing.

Some 60% of middle school students and 30% of elementary school students in Onagawamachi as well as 70% of middle school students in Ohtsuchimachi attend collaborative schools.

Imbuing scholastic aptitude and providing a place to go



Community problem-solving study



High school town guides



Workplace experience at global corporations



To those who will create a new era, driven by the feelings for what they lost in the earthquake

Steps toward *Committee to Consider Onagawa Education*

- Boards of education, local elementary and middle schools, residents and NPOs worked together to consider future education in the community and established the Committee as a base for implementation.
- They split into nine task forces, with an elementary or middle school teacher heading up each task force. Academics and NPOs participate in all groups as members.
- Serving as a base for teachers to face local problems and put into practice independent, collaborative and creative learning.

Number 1 Task Force	School Administration/Management Task Force
Number 2 Task Force	Educational Motivation Task Force (Kokorozashi Kyoiku Suishin Bukai) ※Career education promoted by Miyagi Prefecture
Number 3 Task Force	Scholastic Aptitude Enhancement Task Force
Number 4 Task Force	Stamina/Health Enhancement Task Force
Number 5 Task Force	Mental and Moral Education Task Force on Bullying, School Absenteeism, Student Counseling and Mental Care
Number 6 Task Force	Crisis Management, Disaster Mitigation/Prevention Education Task Force
Number 7 Task Force	Special Needs Education Task Force
Number 8 Task Force	Lifelong Learning/Collaborative Education Task Force
Number 9 Task Force	Sports/Stamina Task Force

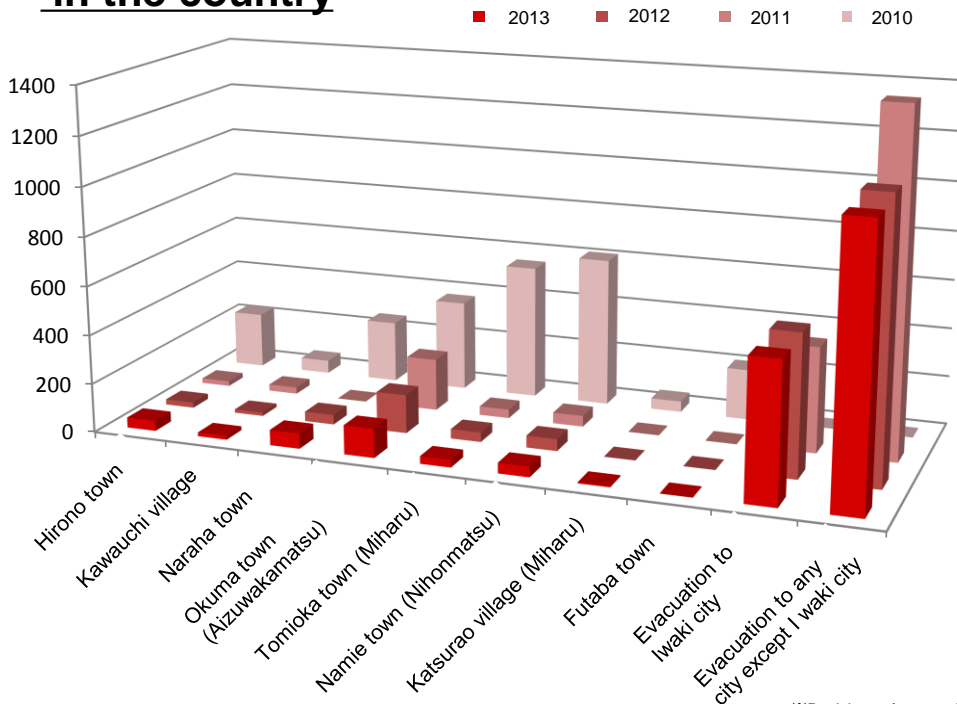
Vision for Education Rebuilding in Futaba County, Fukushima Prefecture

School Attendance Rates within the County

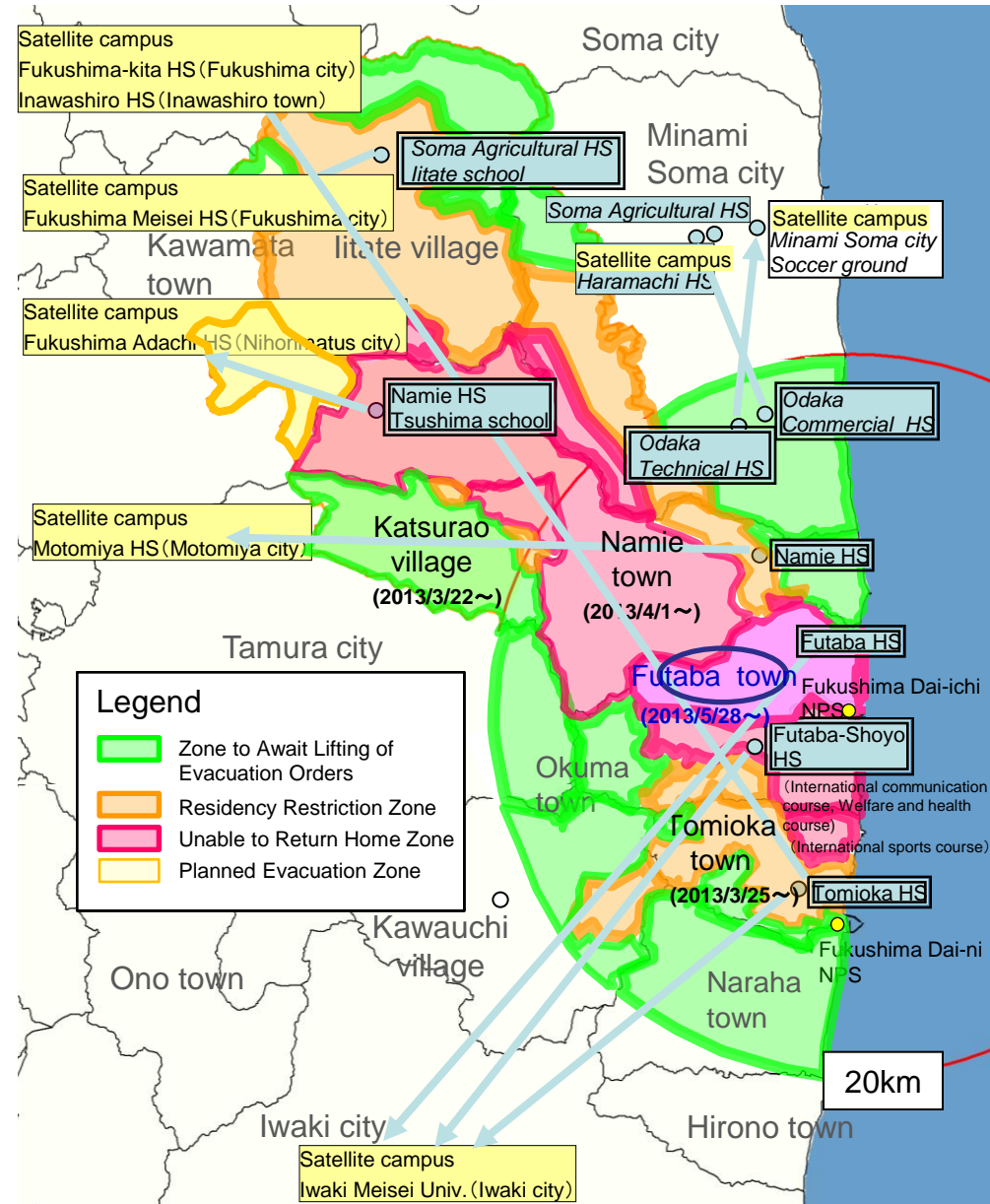
- Kindergarten 9.1 %
- Elementary school 11.5 %
- Middle school 13.9 %
- High school 26.8 %

(Including attendance at newly opened schools at new locations.)

Number of students attending middle schools in the country

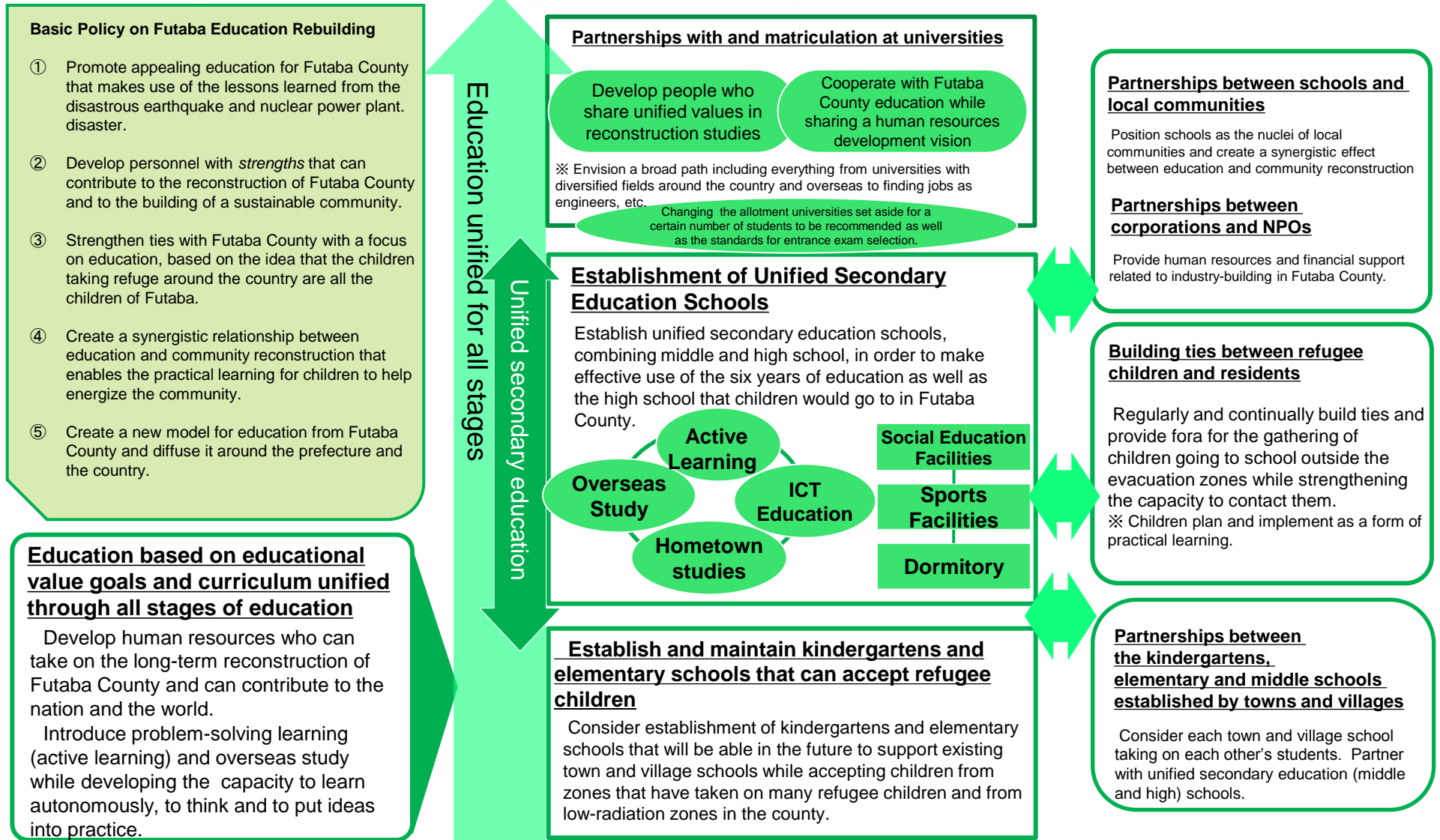


Evacuation Situation for County High schools



Schemata for Future Education Rebuilding Vision for Futaba County in Fukushima Prefecture

- Contribute to the reconstruction of Futaba County and to the building of a sustainable community and develop human resources who can play active roles nationwide and internationally.
- Reenergize the community through practical learning for children and tie it in to reconstruction.



※ Move forward with a deliberative body composed of eight towns and villages in Futaba County, the prefectural and central governments, while Fukushima Prefecture and the central government provide support.