

インドネシア(1)：インドネシアにおけるノンフォーマル教育に対する PKBM(CLC)の役割

アデ・クスミアディ

インドネシア国民教育省 インドネシア第2リージョン(セマラン)

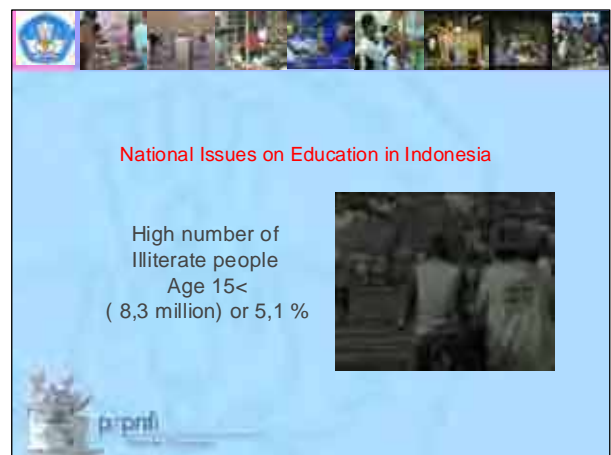
ノンフォーマル・インフォーマル教育開発センター 所長

Mr. Ade Kusmiadi

Director, Regional II Semarang Center for Development of Nonformal & Informal Education Ministry of National Education, Indonesia



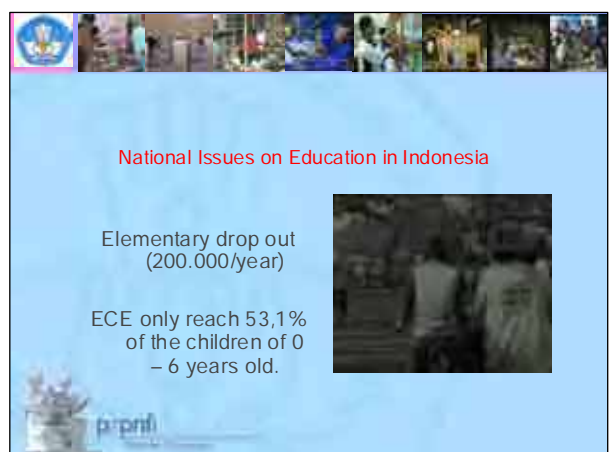
1



2



3



4

POLICIES AND MAIN PROGRAMMES OF NFE

1. Early Childhood Education
2. Literacy Programme
3. Equivalency Programme
4. Courses, Training and Life skills
5. Reading Culture Improvement
6. Women Empowerment
7. Gender Mainstream
8. Institution Reinforcement (CLC, Courses, Education Office)



5

What & How NFE for community development

?

PKBM

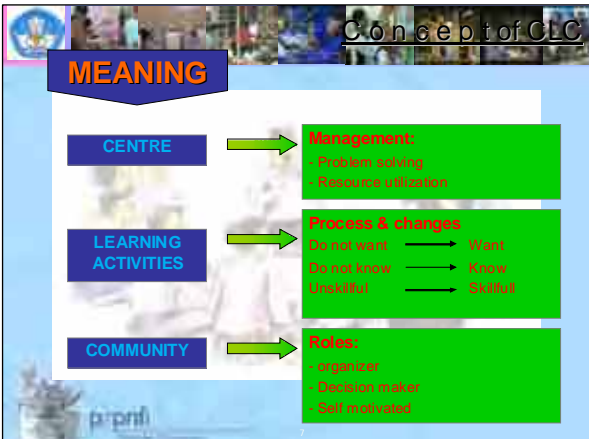


6

Concept of CLC

MEANING

| | | |
|---------------------|---|---|
| CENTRE | → | Management: - Problem solving - Resource utilization |
| LEARNING ACTIVITIES | → | Process & changes Do not want → Want Do not know → Know Unskilled → Skilled |
| COMMUNITY | → | Roles: - organizer - Decision maker - Self motivated |



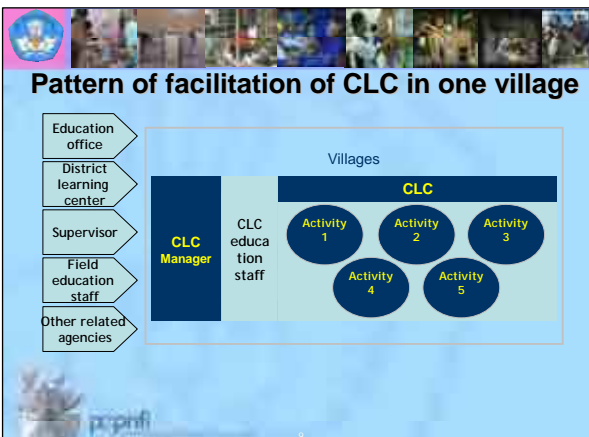
7

Type of CLC and its Characteristics

| | Other parties | Community |
|--------------------------|---|--|
| Institutional based CLC | <ul style="list-style-type: none"> • organizer • education staff • facilities | <ul style="list-style-type: none"> • Target beneficiaries of programs/ activities |
| Comprehensive CLC | <ul style="list-style-type: none"> • center organizer • education staff • facilities | <ul style="list-style-type: none"> • satellite organizer • education staff • facilities • Target beneficiaries of programs/ activities |
| Community based CLC | <ul style="list-style-type: none"> • partners • Facilitator | <ul style="list-style-type: none"> • center organizer • education staff • facilities • Target beneficiaries of programs/ activities |
| Government CLC (JAKARTA) | <ul style="list-style-type: none"> • government | <ul style="list-style-type: none"> • Facilities • budget • Program (top-down) • Target beneficiaries of programs/ activities |

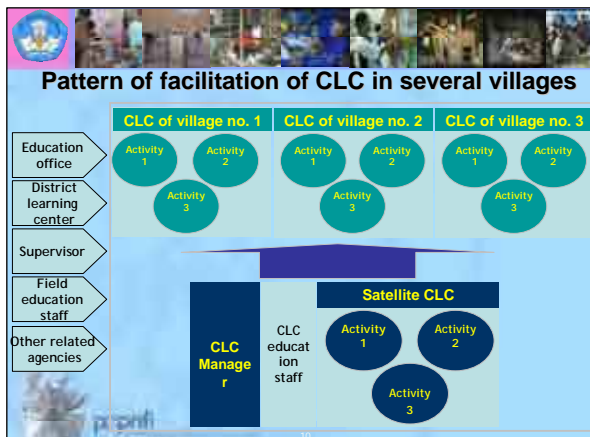
8

Pattern of facilitation of CLC in one village

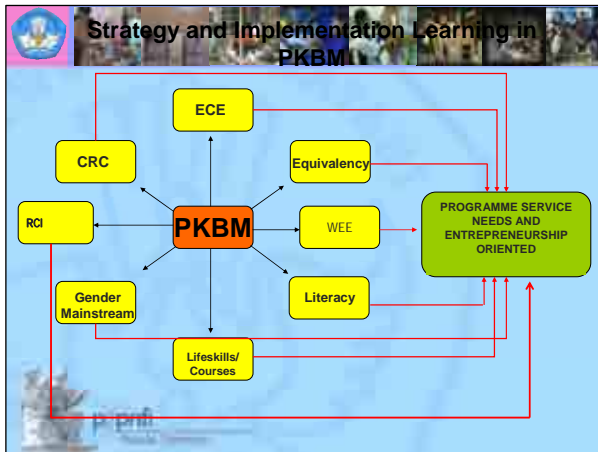


9

Pattern of facilitation of CLC in several villages



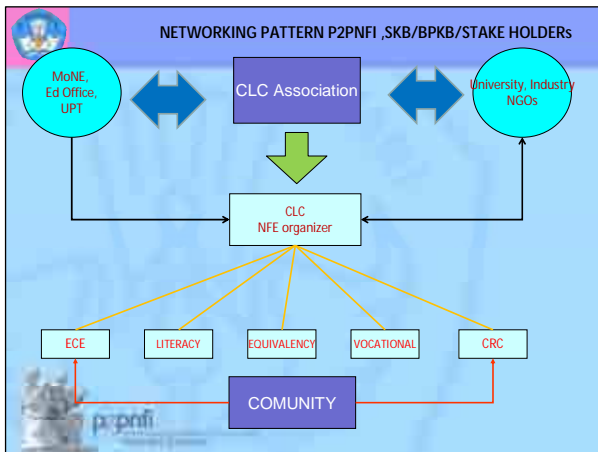
10



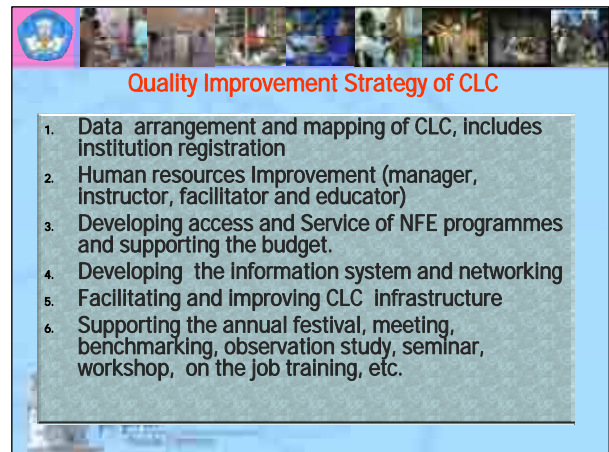
11



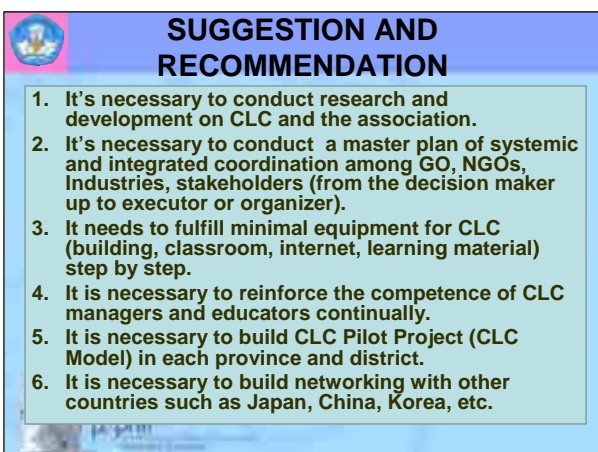
12



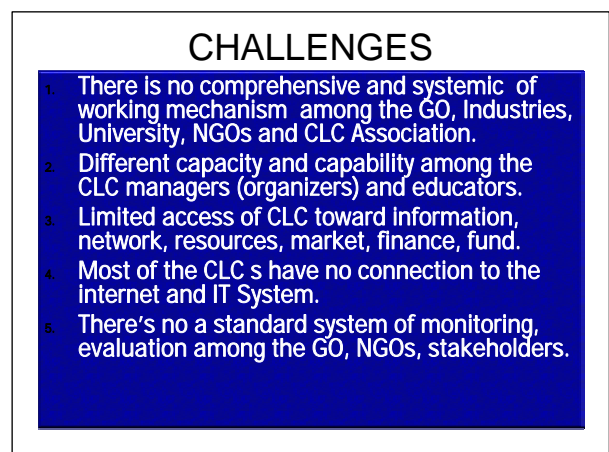
13



14



15



16



17